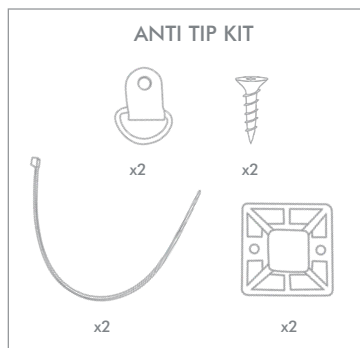
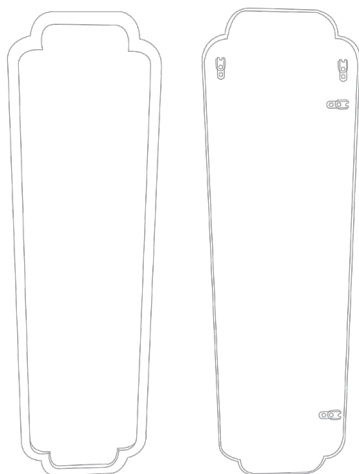


# OLIVER BONAS

## SAFIRA FLOOR LENGTH MIRROR



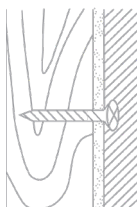
Please use the anti-tip kit provided.

Metal D-ring fixing must be screwed into the back of the wooden frame and not into the MDF backing.

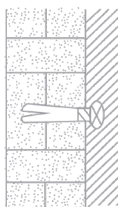
Wall Fixings are not provided.

Wall fixing must be selected according to the type of wall and the weight of item to be hung. We recommend seeking professional advice before selecting fixings.

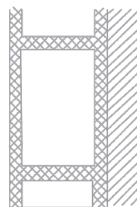
Check the mirror periodically to ensure fittings are secure.



Wood



Brick



Cavity  
(Special fitting needed)

# OLIVER BONAS

## Mirror Care Information

We hope you love your purchase, however if you aren't completely happy please retain your packaging to ensure its safe return

### WOODEN SAFIRA FLOOR LENGTH MIRROR

Not suitable for bathrooms or damp environments.

Not suitable for outdoor use

Not suitable for children's rooms.

### CLEANING INSTRUCTIONS

When cleaning the glass, use a damp cloth or a recognized glass cleaning product.

Avoid abrasive cleaners.

Please retain these instructions for future reference.